

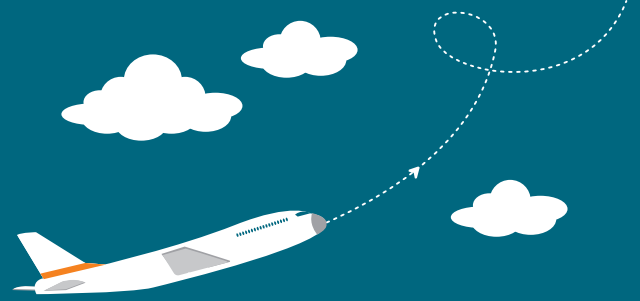
AVIATION BAROMETER

QUARTER 3 | JULY 2016 – SEPTEMBER 2016



AIRPORTS COMPANY
SOUTH AFRICA

GROWTH IN AIR TRAVEL UNDERLINES SECTOR'S RESILIENCE



In the second edition of Airports Company South Africa's Aviation Barometer, we provide passenger traffic information on the third quarter for the nine airports we own and operate.

The passenger figures are gathered and provided are a year on year comparison, giving us a snapshot of the air travel trends. This will help various stakeholders to track the sector's performance, and assess the impact of macro and micro economic factors on air traffic.

The period reviewed in this update covers the third quarter from July to September 2016.

During this quarter, we recorded 4.98 million total arrivals and 4.77 million total departures across our network of airports. This is an increase of 4.4% compared to the same period in 2015.

The growth in air traffic continues to underline the aviation sector's resilience during challenging economic conditions.

DOMESTIC

- Arrivals increased by 3.8%, and departures by 3.7% compared to the third quarter of 2015.
- Domestic passenger traffic in the third quarter is traditionally slightly lower in absolute numbers during the South African winter.
- A significant increase in passengers in and out of Durban's King Shaka International Airport. Total arrivals and departures for King Shaka International were 1.3 million passengers, compared to 1.2 million in the same period in 2015, a rise of 8.4%.

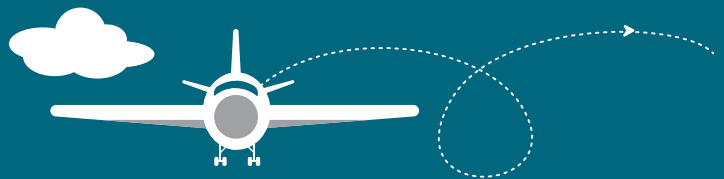
INTERNATIONAL

- International arrivals rose by 5.5% and international departures rose by 5.7% compared to the third calendar quarter of 2015 driven by the northern hemisphere's summer season.

REGIONAL

- Continued strong performance in travel between South Africa and the four neighbouring - Namibia, Swaziland, Lesotho and Botswana.
- Arrivals increased by 7.8%.
- Departures increased by 8.5%.

KEY INDICATORS Q3 2015 vs Q3 2016



INTERNATIONAL
ARRIVALS UP BY
5.5%



INTERNATIONAL
DEPARTURES UP BY
5.7%



REGIONAL
ARRIVALS UP BY
7.8%



REGIONAL
DEPARTURES UP BY
8.5%



DOMESTIC
ARRIVALS UP BY
3.8%



DOMESTIC
DEPARTURES UP BY
3.7%



TOTAL
ARRIVALS UP BY
4.4%



TOTAL
DEPARTURES UP BY
4.4%

INTERNATIONAL ARRIVALS & DEPARTURES

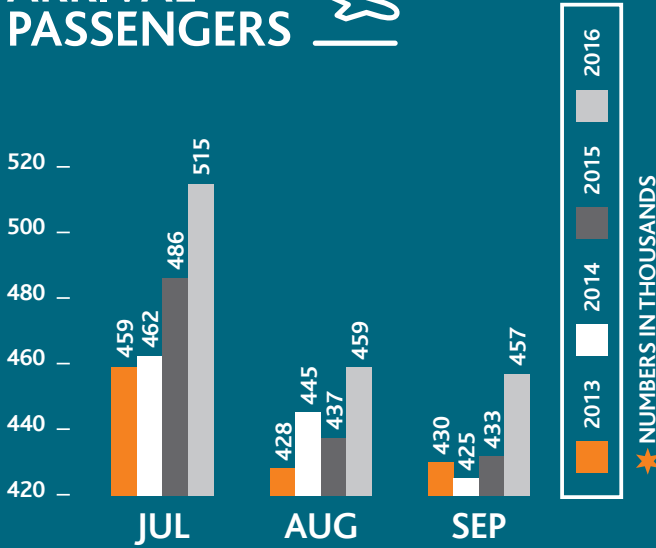


INTERNATIONAL ARRIVALS

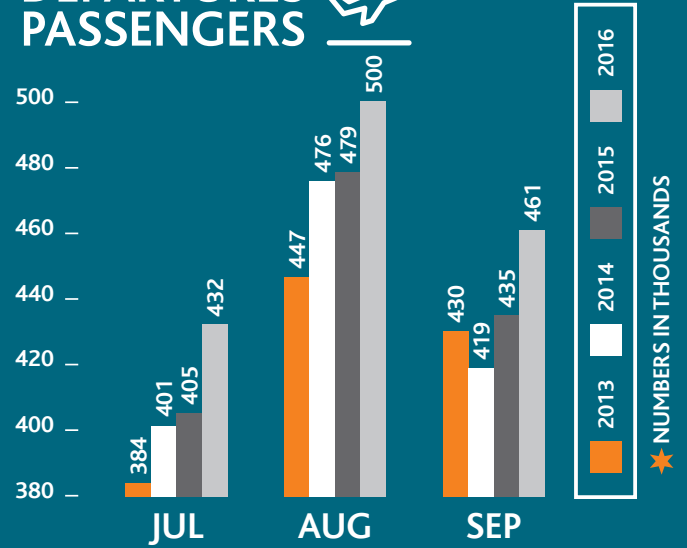


INTERNATIONAL DEPARTURES

INTERNATIONAL ARRIVAL PASSENGERS



INTERNATIONAL DEPARTURES PASSENGERS



REGIONAL ARRIVALS & DEPARTURES



REGIONAL ARRIVALS

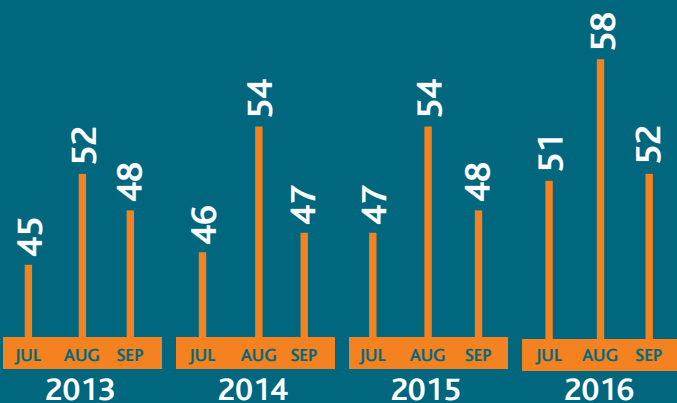


REGIONAL DEPARTURES

REGIONAL ARRIVAL PASSENGERS



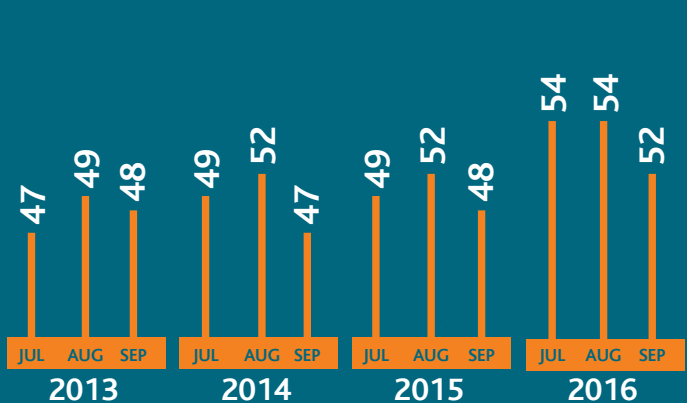
★ NUMBERS IN THOUSANDS



REGIONAL DEPARTURES PASSENGERS



★ NUMBERS IN THOUSANDS



DOMESTIC ARRIVALS & DEPARTURES

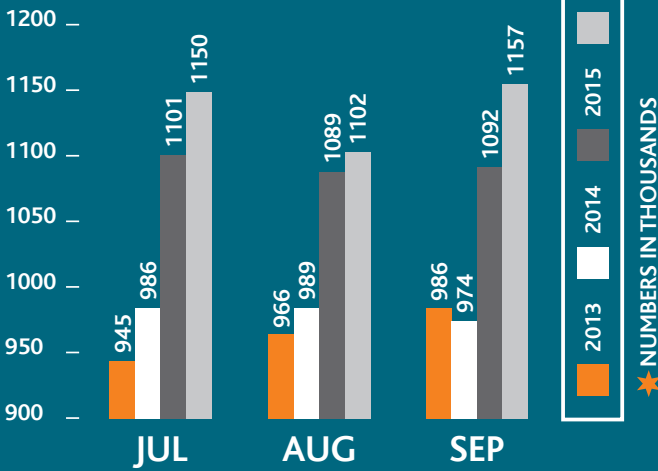


DOMESTIC ARRIVALS

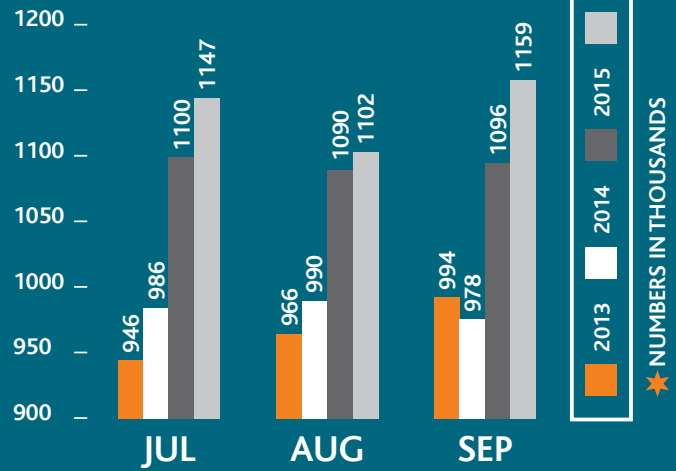


DOMESTIC DEPARTURES

DOMESTIC ARRIVAL PASSENGERS



DOMESTIC DEPARTURES PASSENGERS



TOTAL ARRIVALS & DEPARTURES



TOTAL ARRIVALS

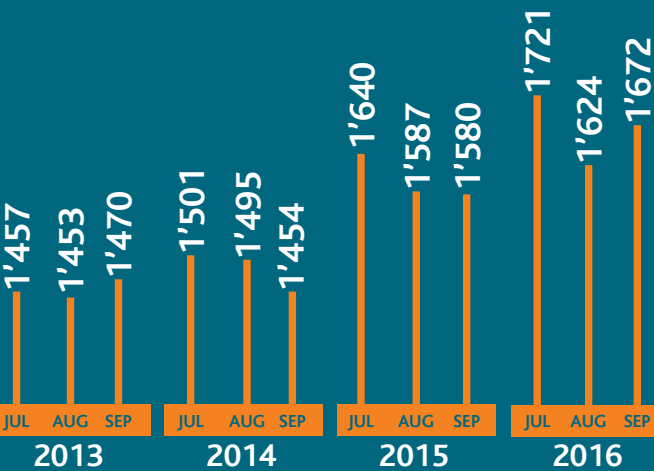


TOTAL DEPARTURES

TOTAL ARRIVAL PASSENGERS



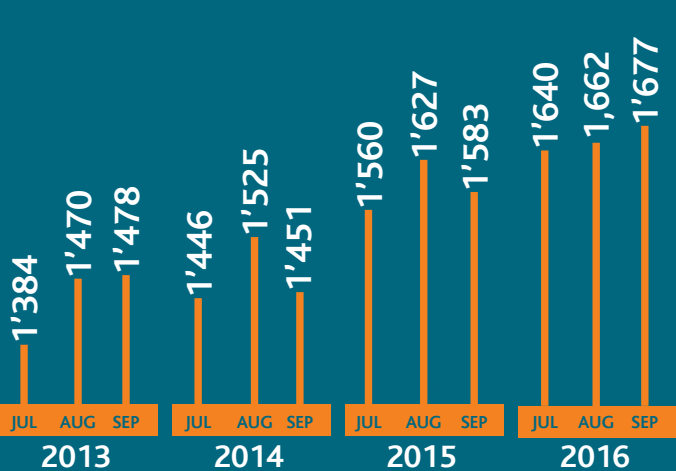
★ NUMBERS IN MILLIONS



TOTAL DEPARTURES PASSENGERS



★ NUMBERS IN MILLIONS



★ The total arrivals and departures figures include international, regional and domestic passenger numbers.



PREPARED BY AIRPORTS COMPANY SOUTH AFRICA
For further information contact mediadesk@airports.co.za

