

O R Tambo International Airport - Waste Monitoring Report 2020-2021

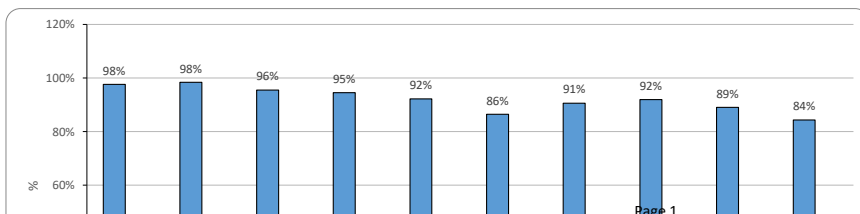
Objective & Target
To Recycle 30 % Of Waste Generated

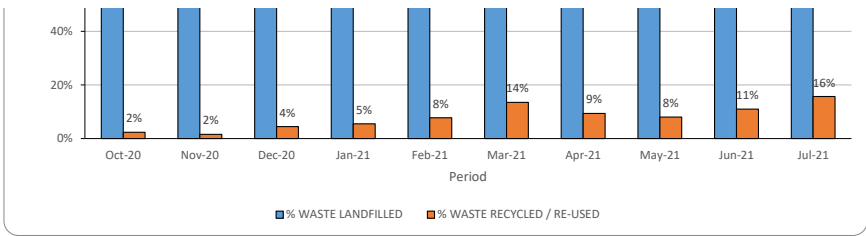
	Oct-20	Nov-20	Dec-20	Jan-21	Feb-21	Mar-21	Apr-21	May-21	Jun-21	Jul-21	Aug-21	Sep-21	Average
% WASTE RECYCLED / RE-USED	2%	2%	4%	5%	8%	14%	9%	8%	11%	16%	13%	18%	9%
% WASTE LANDFILLED	98%	98%	96%	95%	92%	86%	91%	92%	89%	84%	87%	82%	91%
TOTAL WASTE GENERATED	132	168	282	158	170	218	189	190	169	121	128	164	174,18
WASTE TO LANDFILL (KG)	Oct-20	Nov-20	Dec-20	Jan-21	Feb-21	Mar-21	Apr-21	May-21	Jun-21	Jul-21	Aug-21	Sep-21	
NON HAZARDOUS													
GENERAL WASTE	129	165	266	149	157	189	171	175	151	102	112	134	
HAZARDOUS WASTE													
GALLEY WASTE	0	0	0	0	0	0	0	0	0	0	0	0	
EMPTY MOTOR OIL CANS	0	0	0	0	0	0	0	0	0	0	0	0	
OTHER	0	0	4	0	0	0	0	0	0	0	0	0	
AD-HOC (NOT INCL)	0	0	0	0	0	0	0	0	0	0	0	0	
TOTAL HAZARDOUS WASTE	0	0	4	0	0	0	0	0	0	0	0	0	
TOTAL WASTE TO LANDFILL	129	165	269	149	157	189	171	175	151	102	112	134	
WASTE RECYCLED (KG)	Oct-20	Nov-20	Dec-20	Jan-21	Feb-21	Mar-21	Apr-21	May-21	Jun-21	Jul-21	Aug-21	Sep-21	
PLASTIC													
PET	1	0	0	0	0	1,4	0,7	0	0,4	2	1,3	2,8	0
PET MIXED	0	0	0	0	0	0,0	0,0	0	0,0	0	0,0	0,0	0
PP	0	0	0	0	0	0,0	0,1	0	0,4	0	0,4	0,8	0
LDPE SOFT	0	0	0	0	6	6,9	4,2	3	4,5	3	2,5	3,9	0
HD	0	0	0	0	0	0,2	0,0	0	0,1	1	0,1	0,7	0
PLASTIC PS	0	0	0	0	0	0,0	0,0	0	0,3	0	0,5	0,5	0
PLASTIC MIX	0	0	0	3	3	0,0	0,0	0	0,0	0	0,0	0,8	0
BOPP	0	0	0	0	0	0,0	0,0	0	0,0	0	0,0	0,0	0
SUB TOTAL	1	0	0	3	10	8,6	5,0	4	5,7	6	4,9	9,5	0
PAPER													
COMMON MIX WASTE	0	0	0	0	0	2,5	2,1	2	1,2	3	4,0	6,2	0
NEWSPAPER	0	0	0	0	0	3,2	0,0	0	0,0	0	0,0	0,0	0
CARDBOARD	3	3	4	5	3	8,8	7,0	6	9,0	7	5,3	8,9	0
WHITE OFFICE PAPER	0	0	0	0	0	0,8	0,3	0	0,0	0	0,0	0,0	0
SUB TOTAL	3	3	4	5	3	15,2	9,4	8	10,2	10	9,3	15,1	0
OIL													
MACHINE OIL	0	0	0	0	0	0	0	0	0,0	0	0,0	0,0	0
FOOD GRADE OIL	0	0	0	0	0	0	0	0	0,0	0	0,0	0,0	0
SUB TOTAL	0	0	0	0	0	0	0	0	0,0	0	0,0	0,0	0
METAL													
SCRAP METAL	0	0	0	0	0	0,0	0	0	0,0	0	0,0	0,0	0
CANS	0	0	0	0	0	0,3	1	0	0,2	0	0,4	0,4	0
FOIL	0	0	0	0	0	0,0	0	0	0,0	0	0,0	0,0	0
SUB TOTAL	0	0	0	0	0	0,3	1	0	0,2	0	0,4	0,4	0
OTHER													
FLUORESCENT TUBES	0	0	0	0	0	0,0	0	0	0,0	0	0,0	0,0	0
LAMP COMPONENTS	0	0	0	0	0	0,0	0	0	0,0	0	0,0	0,0	0
TETRA PAK	0	0	0	0	0	2,2	0	0	0,0	0	0,4	0,7	0
GLASS	0	0	0	0	0	3,3	2	2	2,4	3	2,0	4,4	0
PALLETS	0	0	9	0	0	0,0	0	0	0,0	0	0,0	0,0	0
PRINTER CARTRIDGES	0	0	0	0	0	0,0	0	0	0,0	0	0,0	0,0	0
FOOD WASTE	0	0	0	0	0	0,0	0	0	0,0	0	0,0	0,0	0
SUB TOTAL	0	0	9	0	0	5,5	3	2	2,4	3	2,3	5,1	0
TOTAL WASTE RECYCLED	3	3	13	9	13	29,5	18	15,3	18,6	19,02	16,9	30,21	
SUMMARY													
TOTAL WASTE GENERATED	132	168	282	158	170	218	189	190	169	121	128	164	
PASSENGERS (A+D)													

Consolidated

PLASTIC	1	0	0	3	10	9	5	4	6	6	5	10	0
PAPER	3	3	4	5	3	15	9	8	10	10	9	15	0
OIL	0	0	0	0	0	0	0	0	0	0	0	0	0
METAL	0	0	0	0	0	0	1	0	0	0	0	0	0
ORGANIC WASTE	0	0	0	0	0	0	0	0	0	0	0	0	0
OTHER	0	0	9	0	0	5	3	2	2	3	2	5	0
Waste Distribution	Oct-20	Nov-20	Dec-20	Jan-21	Feb-21	Mar-21	Apr-21	May-21	Jun-21	Jul-21	Aug-21	Sep-21	Average
% Recycled	2%	2%	4%	5%	8%	14%	9%	8%	11%	16%	13%	18%	6%
% Landfilled	98%	98%	96%	95%	92%	86%	91%	92%	89%	84%	87%	82%	94%
General Waste	129	165	266	149	157	189	171	175	151	102	112	134	175
Hazardous Waste	0	0	4	0	0	0	0	0	0	0	0	0	1
Recycled Waste	3	3	13	9	13	30	18	15	19	19	17	30	12
Total	132	168	282	158	170	218	189	190	169	121	128	164	188

Landfill vs Recycled

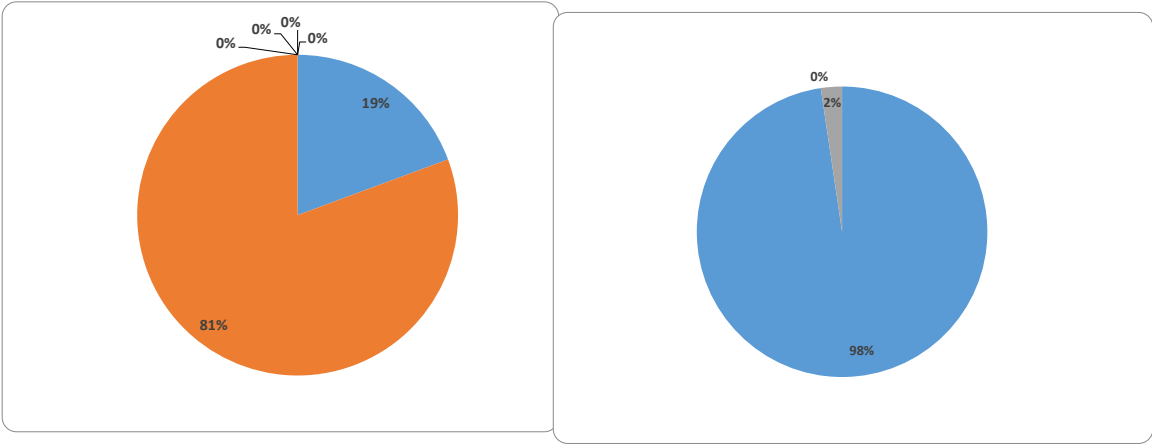




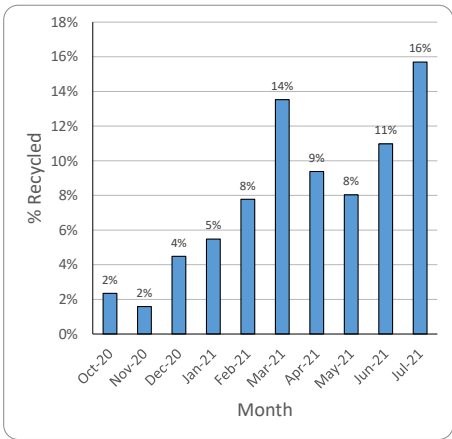
Total Waste Generated vs Number of Pass



Waste Profile



Percentage Recycled Trend



Regression Trend